

- 1
- 2
- 3
- 4
- 5
- 6
- 7
- 8
- 9
- 10
- 11
- 12
- 13
- 14
- 15
- 16
- 17
- 18

MATERIAL

Aluminium profile.

ENDS

Glass-fibre reinforced polyamide based (PA) technopolymer, colour black, matte finish.

STANDARD EXECUTIONS

Assembly by means of M6 screws, not included in the supply.

EL: anodised aluminium, natural colour, matte finish.

SW: epoxy resin coating, RAL 9005 colour black, matte finish.

- **GN 430:** handle without label holder.

- **GN 430.1:** handle with label holder.

FEATURES AND APPLICATIONS

GN 430 and GN 430.1 handles are remarkably suitable for applications on revolving doors, sliding doors or drawers.

GN 430.1 handle is supplied with an end assembled with the paper stripe and protective film inserted into the housing for label holder. It is possible to create customised labels to apply on GN 430.1 handles. Maximum load 400 N, maximum tightening torque 4 Nm.

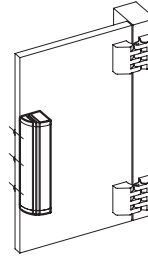
The fitting groove allows fastening the handle in different positions within the dimension f , by means of M6 screws (minimum 10 mm of screwing depth).

SPECIAL EXECUTIONS ON REQUEST

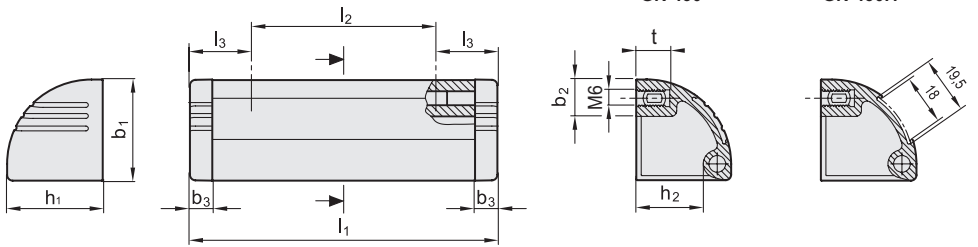
Different lengths.



Application example



Conversion Table	
1 mm = 0.039 inch	
mm	inch
110	4.33
130	5.12
150	5.91
200	7.87
250	9.84
300	11.81
400	15.75
500	19.68



GN 430

GN 430.1

METRIC

Code	Description	Code	Description	l_1	l_2	b_1	b_2	b_3	h_1	h_2	l_3	t	f
GN.29333	GN 430-110-SW	GN.29292	GN 430.1-110-SW	110	66	36	13	8	34	24	22	12	86
GN.29332	GN 430-110-EL	GN.29291	GN 430.1-110-EL	110	66	36	13	8	34	24	22	12	86
GN.29337	GN 430-130-SW	GN.29294	GN 430.1-130-SW	130	86	36	13	8	34	24	22	12	101
GN.29336	GN 430-130-EL	GN.29293	GN 430.1-130-EL	130	86	36	13	8	34	24	22	12	101
GN.29342	GN 430-150-SW	GN.29296	GN 430.1-150-SW	150	106	36	13	8	34	24	22	12	117
GN.29341	GN 430-150-EL	GN.29295	GN 430.1-150-EL	150	106	36	13	8	34	24	22	12	117
GN.29347	GN 430-200-SW	GN.29298	GN 430.1-200-SW	200	156	36	13	8	34	24	22	12	157
GN.29346	GN 430-200-EL	GN.29297	GN 430.1-200-EL	200	156	36	13	8	34	24	22	12	157
GN.29352	GN 430-250-SW	GN.29300	GN 430.1-250-SW	250	206	36	13	8	34	24	22	12	196
GN.29351	GN 430-250-EL	GN.29299	GN 430.1-250-EL	250	206	36	13	8	34	24	22	12	196
GN.29357	GN 430-300-SW	GN.29302	GN 430.1-300-SW	300	256	36	13	8	34	24	22	12	233
GN.29356	GN 430-300-EL	GN.29301	GN 430.1-300-EL	300	256	36	13	8	34	24	22	12	233
GN.29362	GN 430-400-SW	GN.29304	GN 430.1-400-SW	400	356	36	13	8	34	24	22	12	314
GN.29361	GN 430-400-EL	GN.29303	GN 430.1-400-EL	400	356	36	13	8	34	24	22	12	314
GN.29367	GN 430-500-SW	GN.29306	GN 430.1-500-SW	500	456	36	13	8	34	24	22	12	388
GN.29366	GN 430-500-EL	GN.29305	GN 430.1-500-EL	500	456	36	13	8	34	24	22	12	388